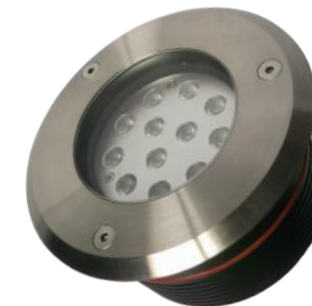


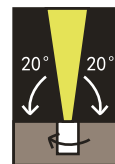
INGROUND UPLIGHTS (UL-1201-A):

ONELITE inground uplights are built using 6063 Aluminum and 316 stainless steel. Our UL-1201 series offers a wireless remote for that perfect installation. Backed by our full replacement 3 year warranty our in-ground uplights are built to last.

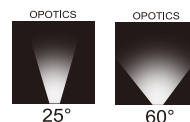


Specification:

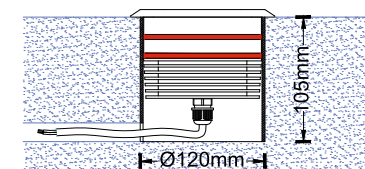
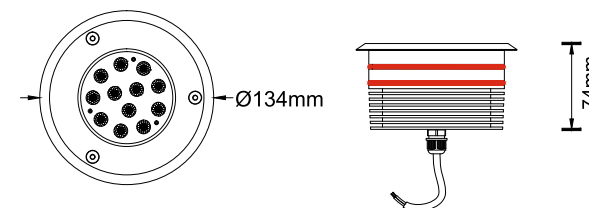
Housing:	Anodizing 6063 extruded Aluminum
Thickness of Oxide Film for Housing:	20~25µm
Front Cover:	Stainless steel 316
Lens:	PMMA, Light transmittance > 85%
Glass:	Step style, Super White, Tempered Glass, T=10mm.
Loading Capacity of Glass:	Exert force area of \varnothing 10mm=1110kgs, \varnothing 30mm=1720kgs, \varnothing 60mm=2000kgs
Waterproof Connector:	PG7 PA IP67
Gasket:	O-ring PMQ silicone seal
LED:	CREE XPE
Driver:	Constant Current
Output:	1 Loop
Working temperature:	-20 C -70 C
Power Cable:	H05RN-F 2*0.75mm ² L=1.5m (low voltage)
Mounting Sleeve:	Anodizing 6063 Extruded Aluminium
Rotatable:	Rotating bracket inside, adjustable direction by remote within 40°.



Adjustable by remote



Input voltage	Input Current	Power	Color	LED Qty	Beam Angle	Luminous Flux(LM)
DC24V	460mA	12W	CW/WW	12pc CREE XPE	25°/40°/60°	CW=850LM, WW=810LM



PRODUCT CODE	DESCRIPTION	CCT	LUMENS
UL-1201-A27K25D	12w INGROUND UPLIGHT - ADJUSTABLE 25 DEGREE - 2700K	2700k	810
UL-1201-A27K60D	12w INGROUND UPLIGHT - ADJUSTABLE 60 DEGREE - 2700K	2700k	810
UL-1201-A4K25D	12w INGROUND UPLIGHT - ADJUSTABLE 25 DEGREE - 4000K	4000k	850
UL-1201-A4K60D	12w INGROUND UPLIGHT - ADJUSTABLE 60 DEGREE - 4000K	4000k	850

DRIVERS AVAILABLE:

- 36w 24V IP67 LED Driver - (Part No: EX-24V36W-IP67)
- 60w 24V IP67 LED Driver - (Part No: EX-24V60W-IP67)
- 150w 24V IP67 LED Driver - (Part No: EX-24V150W-IP67)
- 200w 24V IP67 LED Driver - (Part No: EX-24V200W-IP67)